



Assembly Guide

Agile Model 52 Gun Cabinet

Agile Model 40 Add-On Gun Cabinet

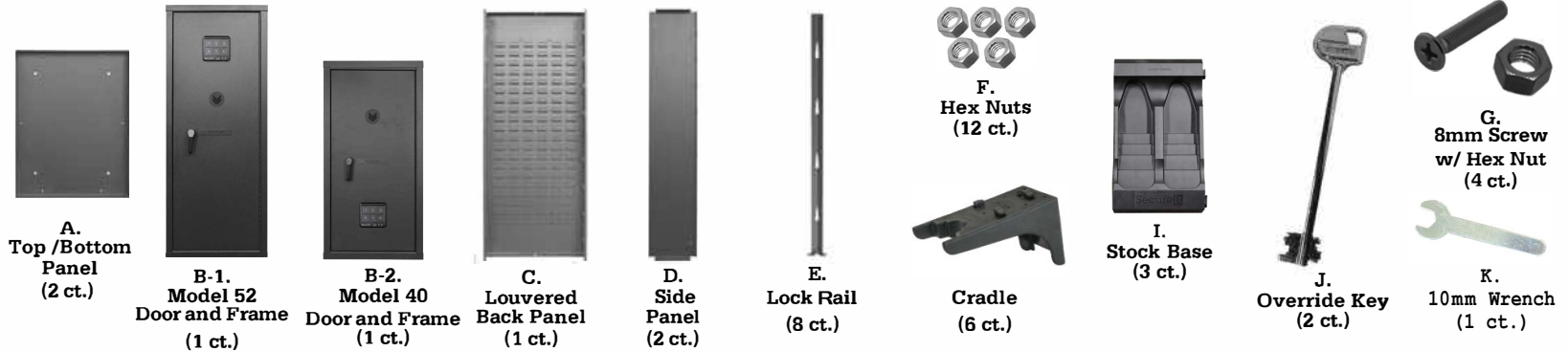
Locking Cabinet with a Six-Gun Storage Capacity

Two Person Assembly Recommended

Brand New, Energizer or Duracell, Alkaline, 9 Volt Battery Recommended

Phillips Head Screwdriver Needed

Parts List:



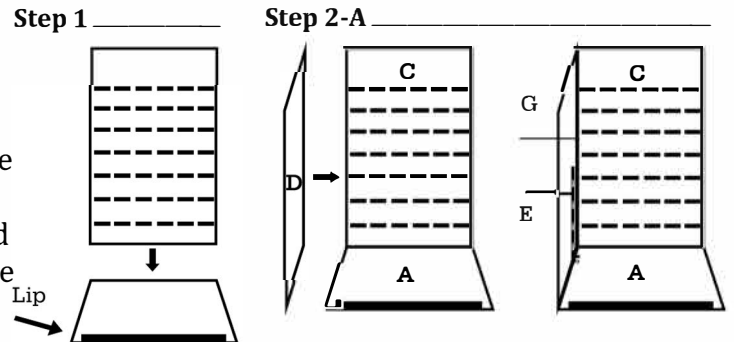
AGILE MODEL 40 OWNER CAUTION NOTICE:

If mounting the Agile Model 40 to an Agile Model 52, WE RECOMMEND ANCHORING THE AGILE MODEL 52 TO THE FLOOR AND WALL PRIOR TO ANCHORING THE AGILE MODEL 40 TO THE TOP OF THE AGILE MODEL 52.

Assembly - Agile Model 40 / Agile Model 52

Review Lock Instructions prior to cabinet assembly

Step 1 - With the lip of the Bottom Panel (Part A) facing you, set the Back Panel (Part C), with the louvers facing up, into the back of the Bottom Panel. The center hole should line up with a threaded peg. Hand tighten a hex nut (Part F) over the threaded peg to secure the bottom and back of the cabinet.



Step 2 - Line up the hooks of a Side Panel (Part D) with the hooks of the Back Panel. Insert the screw/hex nut assembly (Part G) between the center of the panel (*Fig. 01*). Slide a Lock Rail (Part E) over the aligned hooks. The holes on the lock bar fit over a threaded bolt on the cabinet base.

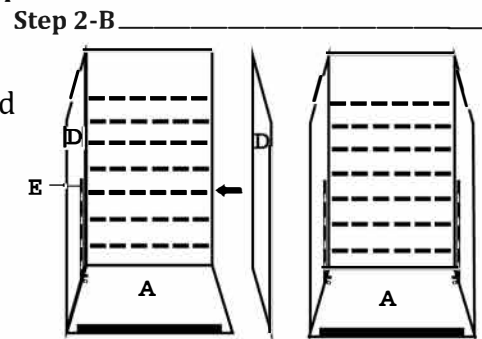
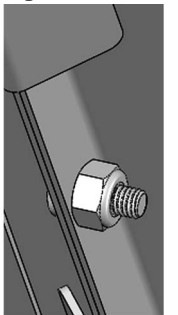
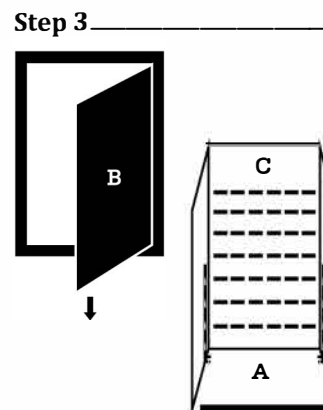


Fig. 01

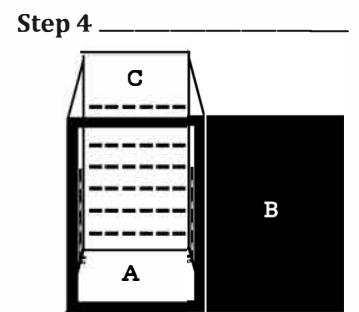


While holding the Lock Rail up straight, hand tighten a hex nut over the threaded peg to secure the Lock Rail to the Bottom Panel. **Repeat this step to construct the opposite bottom-back side of cabinet.**

Step 3 - Place the Door and Frame Panel (Part B-1 or B-2) straight down into the front of the Bottom Panel. **We recommend using two people for this step.**



Step 4 - Place the Top Panel (Part A), with the lip facing the front, on top of the Back Panel, Side Panels and Door Frame, then open the door. In the back-center and front-center of the top of the cabinet, hand tighten a hex nut over a threaded bolt to secure the Top Panel onto the cabinet.



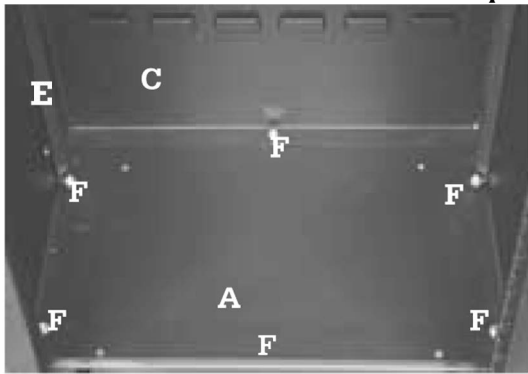
Assembly instructions continued on page 2

CABINET ASSEMBLY CONTINUED

Step 5 - Align the front hooks of the Door and Frame Panel (Part B) with both Side Panels and insert the appropriate pin/bolt assembly. Slide the Lock Rails over the hooks. The base of the lock bars will fit over the threaded bolts of the Bottom Panel.

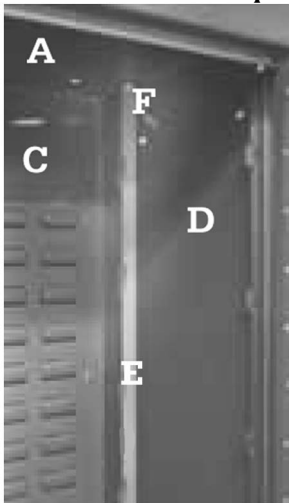
Hand tighten the hex nuts (Part F) over the threaded bolts to secure the Lock Rails to the base. Repeat this step for the opposite front side of the cabinet. At this point, the bottom half of the cabinet has its Lock Rails set and hand screwed on.

Step 5



Step 6 - Slide a Lock Rail over the hooks lined up on the top-back of the cabinet. Hand tighten a hex nut over the threaded bolt to secure to the Top Panel. Repeat for opposite top-back side of the cabinet

Step 6



Step 7 - Slide a Lock Rail over the hooks lined up on the top-front of the cabinet. Hand tighten a hex nut over the threaded bolt to secure to the cabinet top. Repeat for opposite top-front side of the cabinet

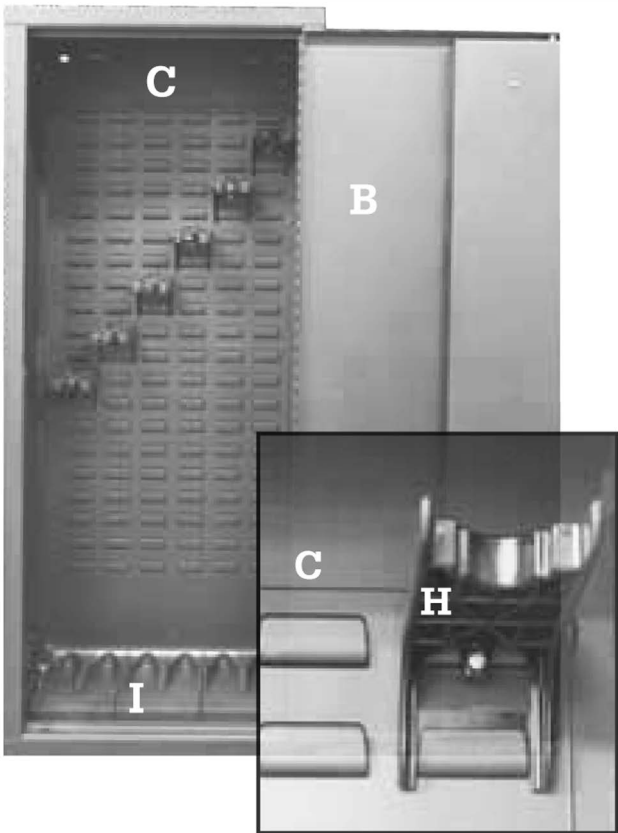
Step 8 - With the 10mm wrench (Part K) or a socket, tighten down all 12 hex nuts on the inside of the cabinet.

Step 9 - Place the three (3) interlocking Stock Bases (Part I) at the bottom of the cabinet with the SecureIt logo facing front.

Step 10 - Complete your cabinet by adding the six (6) Cradles (Part H) onto the back louvers of the Back Panel (Part C).

Make sure Cradles are flush with the back of the cabinet when adjusting.

Step 10



Once your firearms are placed inside of the cabinet and the Cradles are adjusted to the appropriate height, you have the option to tighten the pan head screw underneath each Cradle.

This screw allows you to affix the Cradle in a particular spot for as long or short as you desire.

Congratulations, you have just assembled your Agile series gun cabinet!

Limited Lifetime Warranty

SecureIt Agile series gun cabinets shall be free from defects in material and workmanship for life. This warranty applies only to new products purchased from SecureIt or its authorized distributors and dealers. Electronics carry a two (2) year warranty from the date of purchase. Must provide proof of purchase to obtain service under this warranty. This warranty does not apply to damage or loss resulting from accident, misuse, improper installation, scratching of paint, normal wear and tear, or negligence. The responsibility of SecureIt under this warranty is limited to replacement or repairs of defective parts with all transportation charges paid by the original purchaser.

Lock Instructions

Your new Agile series gun cabinet includes a customizable, electronic biometric lock with a key override and a USB-C power port.

Factory (Default) Lock Settings:

Manager Code: 1-2-3-4-5-6

User One: 1-1-1-1

User Two: 2-2-2-2

Keypad Sound: On

Keypad Backlight: On

LED Lights:

Left LED: Red (Low Battery Warning Light)

Right LED: Yellow (Input Registered) / Green (Correct Code Received)

NOTE: Never store or place your override keys inside the cabinet. Always make programming changes with the door open, and test the new codes/fingerprints before closing or locking the door.

We only recommend installing brand new (directly from the store), brand name (Energizer or Duracell), alkaline batteries. Do not use lithium or rechargeable batteries.

To reprogram the manager code:

1. Remove the round, black plastic cover on the inner door panel to reveal the red reset button.
2. Press and release the red reset button.
3. Enter a new manager code, between 3 and 12 digits long.
4. Press and release the red reset button to save the code.
5. Test the new code to confirm.

To reprogram the user codes:

1. Remove the round, black plastic cover on the inner door panel to reveal the red reset button.
2. Select the code you'd like to reprogram. Press 1 for code number one or 2 for code number two, then immediately press the red reset button.
3. Enter a new user code, between 3 and 12 digits long.
4. Press and release the red reset button to save the code.
5. Test the new code to confirm.
6. Follow steps 1-5 to reprogram the other user code.

To program fingerprints:

1. Remove the round, black plastic cover on the inner door panel to reveal the red reset button.
2. Press the number 3 keypad button, then immediately press and release the red reset button.
3. Press one fingerprint against the scanner until you hear a small beep.
4. Reposition your finger and repeat step 3, until you hear a long beep and the green LED flashes.

Note: If the yellow LED flashes three times, then the fingerprint was not saved and you'll need to repeat the process.

Turning the fingerprint scanner ON/OFF:

In the standby state, press the 6 button twice, then press and release the red reset button to disable or enable the fingerprint scanner.

Turning the Keypad Sound ON/OFF:

In the standby state, hold down the 4 button to enable or disable sound.

Turning the Keypad Backlight ON/OFF:

In the standby state, hold down the 6 button to enable or disable the keypad's backlight.

Factory reset:

To revert to the default settings, hold the red reset button for 5 seconds, until you hear a long beep.

Lock Out Mode:

If you enter incorrect codes or fingerprints five times in a row, then the keypad will go into lock out mode for 60 seconds. During lock out mode, the keypad will beep every second. You will need to wait until the keypad stops beeping before you can try again.

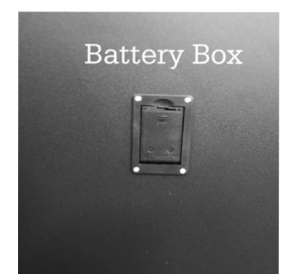
USB-C Power Port:

If the battery is dead or weak, then you can power the keypad with a USB-C power cord and the power port on the bottom, right side of the keypad.

We only recommend installing brand new (directly from the store), brand name (Energizer or Duracell), alkaline batteries. Do not use lithium or rechargeable batteries.

Key Override:

The key hole is covered by the Agile name plate on the door. Remove the name plate with a Philips head screwdriver to access the key hole.



Mounting the Agile Cabinets

How to mount an Agile Model 40 to an Agile Model 52

Parts List:



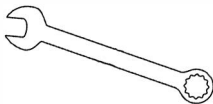
H-1.
Screws
(4 ct.)



H-2.
Washer
(8 ct.)



H-3.
Hex Nut
(4 ct.)



10mm Wrench



Medium Size
Phillips-Head Screwdriver

CAUTION: Serious injuries can occur from safe tip-over.

Step 1 - Anchor the lower safe to the floor or wall before mounting the upper safe on top.

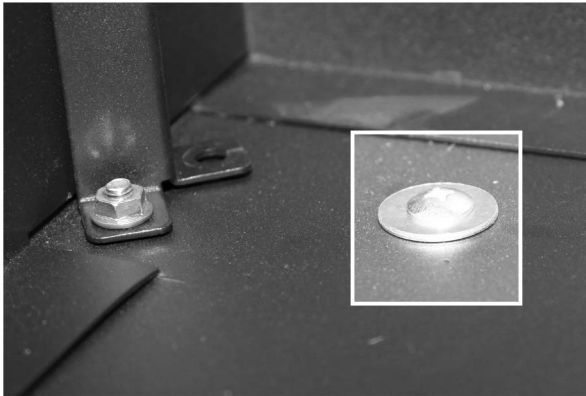
Step 2 - With two people, safely lift and place the upper safe on top of the lower safe.

Step 3 - Insert a screw (H-1) through a washer (H-2), then push the screw through the hole on the bottom of the upper safe into the hole on the top of the lower safe. Repeat this step for the remaining three mounting holes.

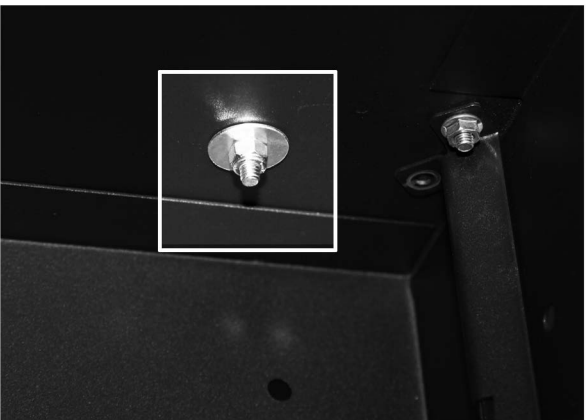
Step 4 - Inside the lower safe, slide a washer (H-2) over the screw (H-1), then hand tighten a hex nut (H-3) onto the screw. Repeat this step for the remaining three screws.

Step 5 - Use a medium size screwdriver and 10mm wrench to tighten all the screw and hex nut connections.

Step 3



Step 4



**Congratulations, your Agile series cabinets
are now mounted together!**

